

# FREDERIC IMBERT

## THE 4004 REBORN COLLECTION – THE TIMELESS MASTERPIECE

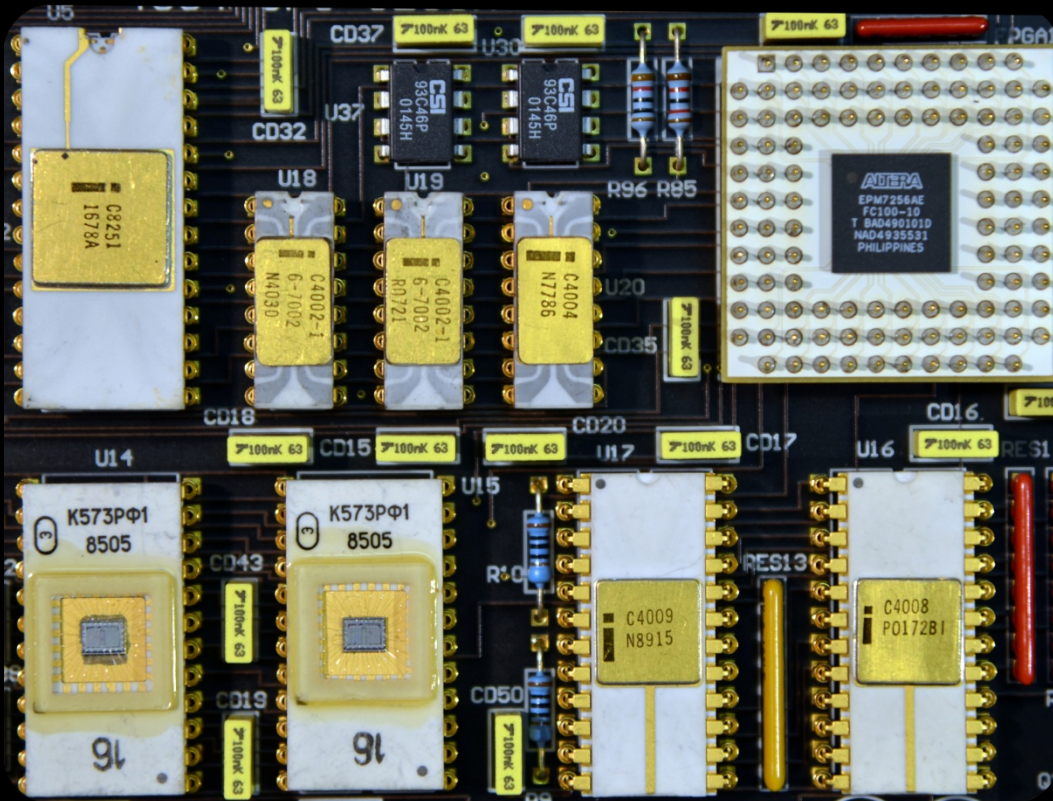
- **For its 50<sup>th</sup> anniversary**, a tribute to the very first and most iconic microprocessor of the history: the Intel™ 4004 in ultra rare grey traced ceramic version, honored inside a single time masterpiece.

- The artwork combines Art and Science, vintage and modernity, and technologies of today and yesterday to reveal a unique piece of horology Art.



### THE ARTISTIC CREATION

The improbable functional assembly of Russian and American parts makes the heart beat of the 4004 Timeless Masterpiece.



- The heart of the artwork is designed with a genuine museum grade Intel™ 4004 in grey traced ceramic version, the rarest version available.

- Russian displays were first designed during the 60's. They are formed by a stack of 10 cathodes, representing the digits 0 to 9.

- When a voltage is applied between the front grid and one of the 10 cathodes, neon gas inside the display ionizes instantly as a halo around the cathode : the digit appears.

- Neon bulbs are fitted with a front lens to evenly distribute the light.

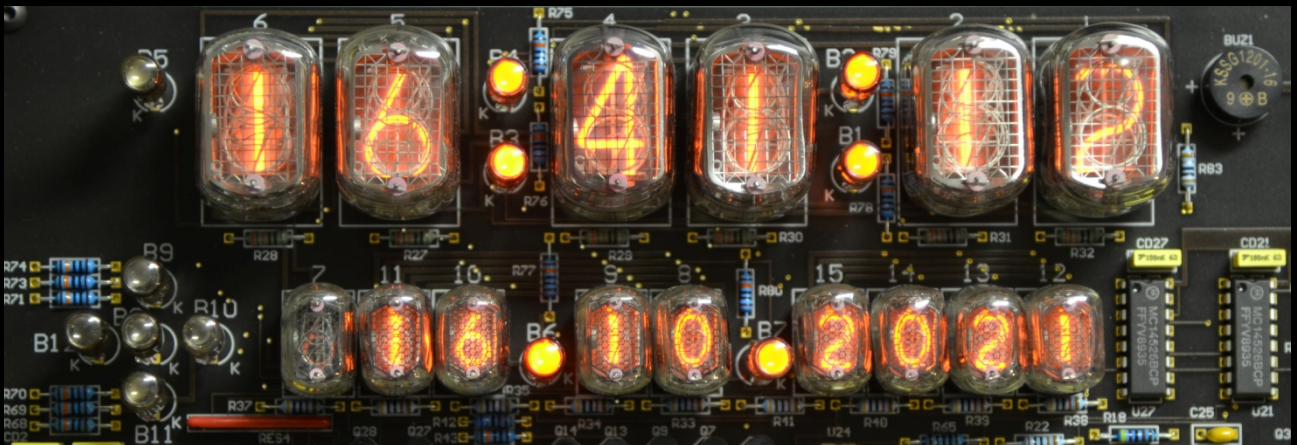


# FREDERIC IMBERT

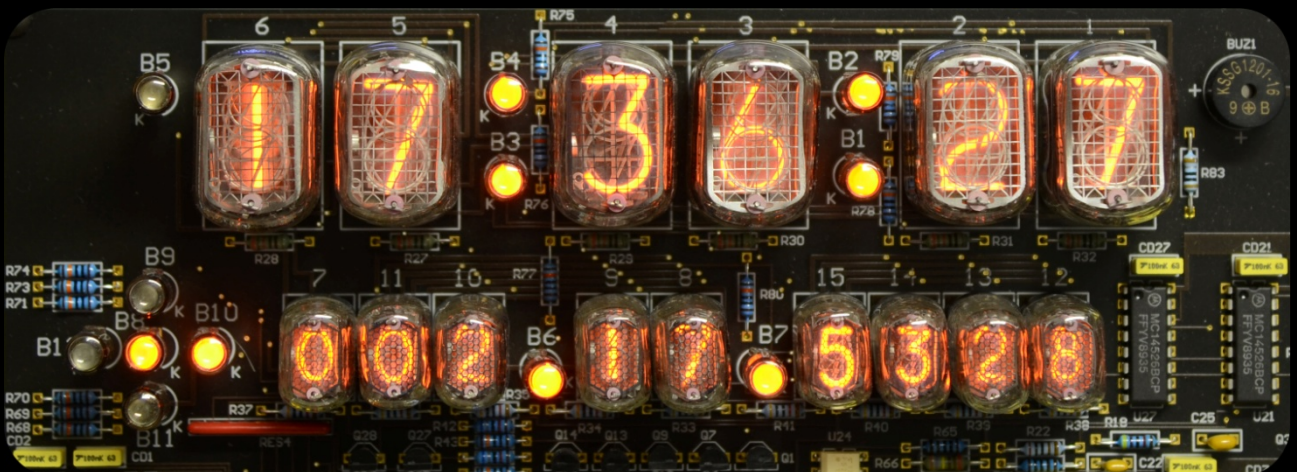
## THE 4004 REBORN COLLECTION – THE TIMELESS MASTERPIECE

### THE DISPLAYS

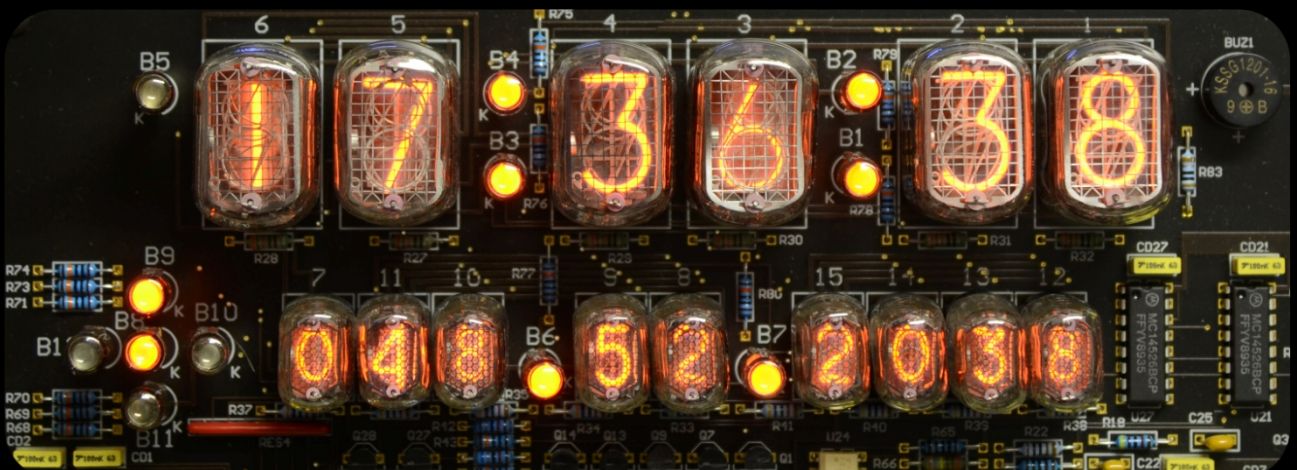
Local time, current date and geographic coordinates of the artwork (longitude, latitude, altitude) are displayed successively, with absolute accuracy.



Local time 16:41:12 and current date October 16<sup>th</sup>, 2021



Local time and current longitude 002°17'53.28" East



Local time and current latitude 48°52'20.38" North

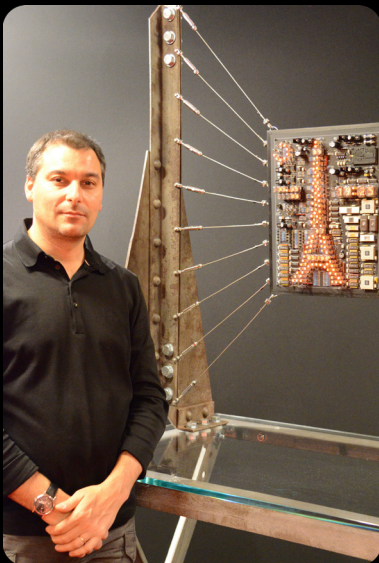
# FREDERIC IMBERT

## THE 4004 REBORN COLLECTION – THE TIMELESS MASTERPIECE

### ARTWORK DESCRIPTION

- Unique piece, n° 1 of 1 – Reference 4004TM
- Genuine Intel™ 4004 inside, museum grade grey traced ceramic version
- Certificate of authenticity for the Intel™ 4004 with detailed timing diagrams and waveforms
- Local time display on the 1<sup>st</sup> line
- Seconds 00 to 19 : current date display on the 2<sup>nd</sup> line
- Seconds 20 to 29 : longitude display of the artwork
- Seconds 30 to 39 : latitude display
- Seconds 40 to 49 : altitude display
- Seconds 50 to 59 : number of GPS satellites detected
- Selectable time zone
- Automatic adjustment of time, date and geographic position
- Core electronics from 1970 Intel™ and 2000 Altera™ technologies
- Neon displays and neon bulbs from russian technology
- Size : 610 mm (Large) \* 550 mm (Height) \* 50 mm (Deep)
- Weight : 33.1 lbs /15.0 kg

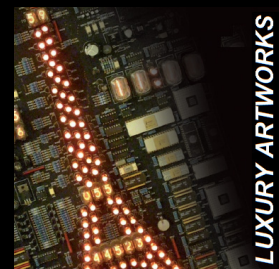
### THE ARTIST



- Passionate about electronics and complex horology, Frédéric invents and develops a new concept in contemporary art, combining Art and Science, vintage and modernity, technologies of today and yesterday.

- For this purpose, he is in constant quest for the most wanted and iconic electronic pieces to imagine his collections and to offer a second life to these historical parts.

- Since 2002, Frédéric has been designing limited editions of artpieces with no compromise, as he had always dreamed them.



Frédéric IMBERT | Paris  
(+33) 6.11.88.49.09  
[f.imbert@luxury-artworks.eu](mailto:f.imbert@luxury-artworks.eu)  
[www.luxury-artworks.eu](http://www.luxury-artworks.eu)